



37 Bartholomew Way Braemar NSW

4 2 2

Encompassing 280sqm, this spacious 5 year old home will delight and surprise it's new owners, and combined with it's large 740sqm block size, provides a feeling of space which few other homes in Nattai Ponds can deliver.

The large rear yard is accessible through a huge sliding colour bond door and would suit any manner of options including a shed, carport, or pool to name but a few.

Located within minutes of Mittagong town centre, this ideal position affords great access to all it's facilities.

Features Include:

- Expansive open plan kitchen, family and living rooms open on to the outdoor alfresco area.

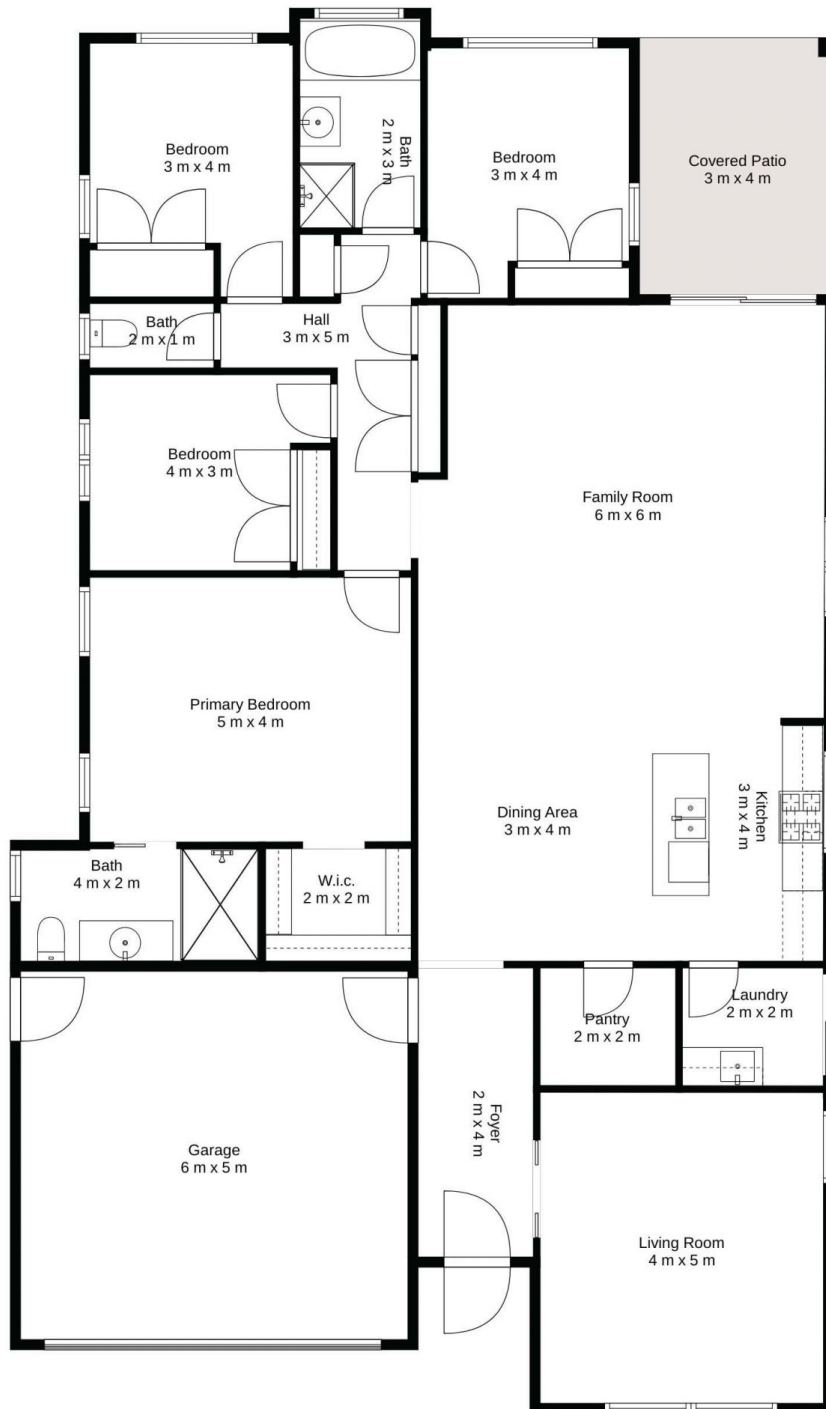
Price : Price Guide \$1,000,000
Building Size : 280 sqm
Land Size : 740 sqm
View : <https://www.carltonrealestate.com.au/sale/nsw/southern-highlands/braemar/residential/house/7999442>



Mark Walters
02 4871 2622

<https://www.carltonrealestate.com.au>

We are one of the longest running, award-winning real estate agencies in the Southern Highlands.



EST 1982

CARLTON

REAL ESTATE

37 BARTHOLOMEW WAY, BRAEMAR

**Scale in metres. Indicative only. Dimensions are approximate.*

All information contained herein is gathered from sources we believe to be reliable. However, we cannot guarantee its accuracy and interested persons should rely on their own enquiries. Some images may contain digital furniture.