



EST 1982

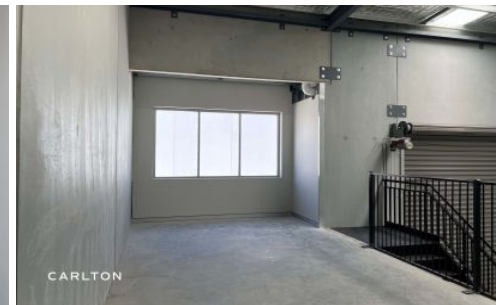
CARLTON

REAL ESTATE

UNIT 18.

<p>UNIT 18 150 SQM</p> <p>GROUND FLOOR</p>	<p>MEZ. 30 SQM</p> <p>MEZZANINE</p>
---	--

FOR LEASE



18/12 Tyree Place Braemar NSW

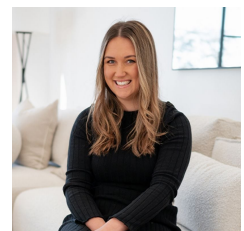
This industrial property boasts modern facilities designed to accommodate various business or storage needs. This spacious unit features high ceilings, wide, bright entryways, dedicated concrete mezzanine, eat in kitchen and bathroom ensuring a comfortable storage environment.

Located just minutes away from the freeway, our property provides unparalleled convenience. Whether you're based locally or need easy access to your stored items while on the go, our strategic location ensures you can reach your storage unit quickly and efficiently.

Building Size : 175 sqm
View : <https://www.carltonrealestate.com.au/lease/nsw/southern-highlands/braemar/commercial/industrial/7637613>



Emma-Jane Carswell
0414 958 960



Rhiannon Hurst
02 4872 5555

<https://www.carltonrealestate.com.au>

We are one of the longest running, award-winning real estate agencies in the Southern Highlands.

UNIT 18.

GROUND FLOOR 150 SQM
MEZZANINE AREA 30 SQM



The measurements provided in the floor plan are approximate and intended for illustrative purposes only. Although we have confidence in the accuracy of the floor plan, we cannot offer any assurance, warranty, or representation regarding its completeness and accuracy.

